



\$25,000 NATIONAL FOOSBALL CHAMPIONSHIPS

JUNE 30 - JULY 4, 2016

7TH ANNUAL NORTH AMERICAN CUP



HOTEL ELEGANTE 2886 CIRCLE DRIVE, COLORADO SPRINGS, CO. 80906

RSVP 800-981-4012 BY JUNE 7, 2016 IFFP FOOSBALL NATIONALS GROUP CODE 1361112

	OPEN DOUBLES ITSF QUALIFIER	OPEN SINGLES ITSF QUALIFIER	ELITE DOUBLES	ELITE SINGLES	PRO DOUBLES	PRO SINGLES	EXPERT DOUBLES	EXPERT SINGLES	AMATEUR DOUBLES	AMATEUR SINGLES	ROOKIE DOUBLES	ROOKIE SINGLES
1	\$1600	\$800	\$800	\$400	\$800	\$400	\$800	\$400	\$800	\$400	WORLDS PACKAGE	WORLDS PACKAGE
2	\$800	\$400	\$500	\$200	\$500	\$200	\$500	\$200	\$500	\$200	TROPHY	TROPHY
3	\$500	\$250	\$250	\$100	\$300	\$150	\$300	\$150	\$300	\$150	TROPHY	TROPHY
4	\$300	\$150	\$250	\$100	\$200	\$100	\$200	\$100	\$200	\$100		
5/6	\$200	\$100			\$150	\$75	\$150	\$75	\$150	\$75		
7/8	\$150	\$75			\$100	\$50	\$100	\$50	\$100	\$50		
9/12	\$100	\$50										
ENTRY FEES	MS90, ELS70 PS60, ES40 AS30, RS25 BS15	MS90, ELS70 PS60, ES40 AS30, RS25 BS15	ELS60 PS50, ES40 AS30, RS25 BS15	ELS60 PS50, ES40 AS30, RS25 BS15	PS50, ES40 AS30, RS25 BS15	PS50, ES40 AS30, RS25 BS15	ES40 AS30, RS25 BS15	ES40 AS30, RS25 BS15	AS30 RS25 BS15	AS30 RS25 BS15	RS20 BS15	RS20 BS15

BOOK ROOM AND AIRLINE TICKETS TODAY. RATES WILL GO UP THE CLOSER WE GET TO THE HOLIDAY WEEKEND!

	OPEN MIXED	WOMEN'S DOUBLES ITSF QUALIFIER	WOMEN'S SINGLES ITSF QUALIFIER	DESIGNATED MIXED/ HANDICAP DOUBLES	OPEN DYP No Table Fee No Dues	EXPERT MIXED	SENIOR DOUBLES ITSF QUALIFIER	SENIOR SINGLES ITSF QUALIFIER	JUNIOR DOUBLES ITSF QUALIFIER	JUNIOR SINGLES ITSF QUALIFIER	BEGINNER DOUBLES BEGINNER SINGLES	WOMEN'S AMATEUR DOUBLES / SINGLES
1	\$400	\$400	\$200	\$150	\$150	\$150	Trophy	Trophy	Trophy	Trophy	Trophy	Trophy
2	\$300	\$300	\$150	\$100	\$100	\$100	Trophy	Trophy	Trophy	Trophy	Trophy	Trophy
3	\$200	\$200	\$100	\$50	\$50	\$50	Trophy	Trophy	Trophy	Trophy	Trophy	Trophy
4	\$100	\$100	\$50	\$30	\$50	\$30	Trophy	Trophy				

ENTRY FEES MS\$50 EL\$40 PS\$35 ES\$30 AS\$25 RS\$20 BS\$15 \$20 \$15 \$20 \$15 \$15 \$15 \$15 \$15 \$15

MASTERS \$175 OD, OS, OM	ELITE \$175 OD, OS, ELD, ELS	PRO \$175 OD, OS, ELD, ELS, PD, PS	EXPERT \$150 OD, OS, ELD, ELS, PD, PS, ED, ES	AMATEUR \$150 OD, ELD, PD, PS, ED, ES, AD, AS	ROOKIE \$130 PD, PS, ED, ES, AD, AS, RD, RS	BEGINNER \$100 ED, ES, AD, AS, RD, RS, BD, BS	JUNIOR 1500 PTS OR LOWER \$80 INCLUDES REGISTRATION PLUS AD, AS, RD, RS, BD, BS, JD, JS	WOMEN'S PACKAGE OF RANK & choice of 3 Women's events
-----------------------------	---------------------------------	---------------------------------------	--	--	--	--	--	--

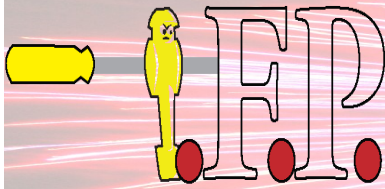
Sign ups close	Thursday Room Opens 5:00PM	Event Starts
7:00AM	Group White Water Rafting Trip. RSVP Online by 6/20/2016	10:00AM
5:45PM	Forward Shootout 100% PB	6:00PM
7:30PM	Designated Mixed	8:00PM
9:30PM	Open DYP	10:00PM
	Friday Room Opens 10:00AM	
10:30AM	Senior Singles 3/5 - SE	11:00AM
10:30AM	Junior Singles	11:00AM
10:45AM	Amateur Singles Women's	12:00PM
12:30AM	Amateur Singles	1:00PM
2:30PM	Pro Singles	3:00PM
4:30PM	Rookie Singles	5:00PM
5:30PM	Open Mixed	6:00PM
7:30PM	Elite Doubles 3/5 - SE	8:00PM
9:00PM	Handicap Doubles	10:00PM
	Saturday Room Opens 9:00AM	
9:30AM	Amateur Doubles	10:00AM
10:30AM	Elite Singles 3/5 - SE	11:00PM
11:30AM	Rookie Doubles	12:00PM
12:30PM	Women's Open Singles	1:00PM
1:30PM	Open Singles	2:00PM
3:00PM	Expert Doubles	5:00PM

MUST READ TOURNAMENT INFORMATION

ALL PLAYERS MUST self register for events online or on site. Email ifptourinfo@gmail.com for passwords. Online registration: <http://ifptour.com/tournaments/registration.html>. Tournament fliers available at www.ifptour.com.
If unable to register on site by sign up closing time: Register online then pay and team up 15 minutes before event start time.
HOTEL LINK- http://www.reseze.net/cassets/mkt/mcmelegante/landing_pages/1361112.html
NEW PLAYERS: Must register on site 30 minutes prior event start time, with photo ID.
PLAYER FEES: \$20 IFPT ANNUAL MEMBERSHIP REQUIRED FOR ALL RANKED PLAYERS 18 AND OLDER. TABLE FEES: \$50 FOR MORE THAN 3 EVENTS OR \$15 PER SINGLE EVENT, JUNIORS AND BEGINNERS TABLE FEES \$30. TABLES ON FREE PLAY.
BLAST FROM THE PAST PROMOTION: 50% off package for players not played since 1/1/2010.
BEGINNER EVENTS: ROUND ROBIN FORMAT TO A SINGLE ELIMINATIONS PLAYOFF. PLAYERS PLACING IN ANY UPPER LEVEL EVENT ARE EXCLUDED FROM BEGINNER EVENTS.
NORTH AMERICA CUP INFORMATION: TEAM CAPTAINS MUST PRE REGISTER BY JUNE 10, 2016 . YOU HAVE UNTIL JULY 2, 2016 TO MAKE PAYMENT AND TURN IN ROSTER.
2017 ITSF WORLD CHAMPIONSHIP QUALIFYING EVENTS: Open Doubles, Open Singles, Women's Doubles, Women's Singles, Senior Doubles, Senior Singles, Junior Doubles, and Junior Singles. Winners earn the right to compete at the 2017 ITSF World Cup. ITSF minimum of 50 years applies to play Senior ITSF Championship division. Players responsible for all expenses. Team USA members for the Nations competition are elected separate from qualifying Championship players.
WHITE WATER RAFTING TRIP: sign ups are due by June 20, 2016. Reserve your spot on the tournament registration page on our web site www.ifptour.com. For non players email ifptourinfo@gmail.com. Pricing and more information shall be posted soon.
MORE INFORMATION: Visit www.ifptour.com, on Facebook at IFFP Pro Foosball Tour or contact Mary Moore at (859) 312-2664 and ifptourinfo@gmail.com.
CALL TO RESERVE A TABLE FOR SALE, \$1545.00 Pre Order and receive a light Bracket Set.
PAYOUTS: All payouts based on entry fees collected. Prize money is distributed Sunday at 3p.m. or later. Staff are volunteers and play for free in all events.
PACKAGE DEALS ALLOW YOU TO BUY PACKAGE EVENTS NOT INCLUDED IN YOUR PACKAGE FOR \$20
NATIONALS IS AN 2017 ITSF WORLD CHAMPIONSHIP QUALIFIER

Sign ups close	Saturday Continued	Event Starts
3:00PM	Women's Am. Doubles	6:00PM
3:00PM	Open Doubles	7:00PM
3:00PM	Beginner Singles	8:00PM
3:00PM	Expert Singles	10:00PM
10:45PM	Sat. No Conflict DYP	11:00PM
	Sunday Room Opens 9:00AM	
9:30AM	BEGINNER SIGN UPS CLOSE NO CONFLICTS WHILE PLAYING	ROUND ROBIN
9:30AM	Beginner Doubles	10:00AM
12:00PM	Pro Doubles	1:00PM
1:00PM	Women's Open Doubles	2:00PM
2:00PM	Junior Doubles	3:00PM
2:00PM	Senior Doubles 3/5 - SE	3:00PM
3:00PM	Expert Mixed 3/5 - SE	5:00PM
	NAC OPENING CEREMONY	8:00PM
	Monday Room Opens 10:00AM	
	Events continue	10:00AM
	Enjoy Pikes Peak, Garden of the Gods, Seven Falls, Horse back riding, Cheyenne Mountain Zoo, Red Rock Canyon, Manitou incline, The Broadmoor, Palmer Park and more!	

FUNDAY



International Foosball Promotions

2016 NORTH AMERICAN CUP 7TH. ANNUAL



MEDALS AND TEAM CUP AWARDED TO THE NORTH AMERICAN CUP STATE TEAM WINNERS! All proceeds from the NAC benefit Foosballclubsusa.com

NORTH AMERICAN CUP

CAPTAINS PRE-REGISTRATION: All team Captains forming a team pre-register by email or phone before **June 10, 2016**. Title your email NAC and send to ifpprotourinfo@gmail.com or call 859-312-2664. Team rosters and payment is due no later than 5:00 p.m. **July 2, 2016**.

FEES: \$20 per player, applied to medals and team cups. All proceeds above expenses donated to foosballclubsusa.com.

MEMBERS: Three divisions Open, Expert and Amateur with a **minimum six members** per team. Two alternates and one coach allowed for each team, maximum of nine per team. Co-ed teams, women's overall ranking applies.

REQUIREMENTS: Must meet at least one requirement: 1). Resident or co-resident of that state. 2). Works in neighboring state. 3). Lives a state without local tournaments, plays with a neighboring state. 4). Two bordering states join when unable to meet minimum six players.

FORMING TEAMS: Anyone can create a team for their state. Two or more teams in the same division from the same state, the first round is a playoff, with the winner representing the state in the NAC. Players compete for only one team.

ALTERNATES: Alternate players entered on the line up form, must play the entire match. Alternates only allowed mid-match due to medical reasons, and must complete the match. The player replaced by an alternate sits out the remainder of the event.

MATCHES: Played in the order of Doubles, Singles, Doubles, Singles, and Doubles. First Doubles and Singles matches play simultaneously. Format 2/3, win by 2 in the 3rd, up to 8, excludes tiebreaker. **All games played no matter the game wins, match winner is by total goals scored.** Point tiebreaker format, Singles of one game win by two unlimited. Tiebreaker player is listed on the line up form prior to start of the match and cannot have played Singles during the match. Matches start on time, recall procedure is strictly enforced. The team with the most points advance. ITSF rules of play apply, with IFP ranks.

EVENT LINEUP FORMS: All lineup forms must be completed in full prior to the start of a match, including the tiebreaker player. Teams are responsible next match on chart and event forms before start.

UNIFORMS: Matching team shirts with the State name centered on the back are required. Jackets and pants are suggested, but not required.

STATE FLAG: State flags are recommended, but not required. Flags are displayed during Opening Ceremony and during matches.

OFFICIALS: One member from each team that is not competing in the match serves as officials when requested.

DISPUTES: Submitted to the tournament Head Official to make the final ruling.

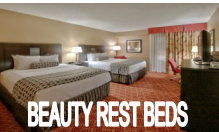
OPENING CEREMONY: Held 8:00 p.m. Sunday, arrive by 7:30 p.m. in team uniform with state flag. Teams are presented in alphabetical order by state. Captains introduce each member by name and ranking.

NEED HELP FORMING A TEAM EMAIL IFPPROTOURINFO@GMAIL.COM

NEW HOST CITY COLORADO SPRINGS, CO.



MAKE NATIONALS YOUR FAMILY VACATION!



NEW HOST HOTEL HOTEL ELEGANTE FULL SPA FACILITY



Start a school based foosball club in your city today. for more information Go to foosballclubsusa.com

INSIDE FOOS PRODUCTIONS ON SITE TO RECORD MATCHES WITH JIM STEVENS COMMENTARY OF FINAL MATCHES.SEE THE INSIDE FOOS BOOTH FOR YOUR 2016 NATIONAL'S DVD. LIVE STREAMING <http://www.netfoos.tv/>

WWW.IFPTOUR.COM

Live Brackets, Registration, Fliers, and Points Book